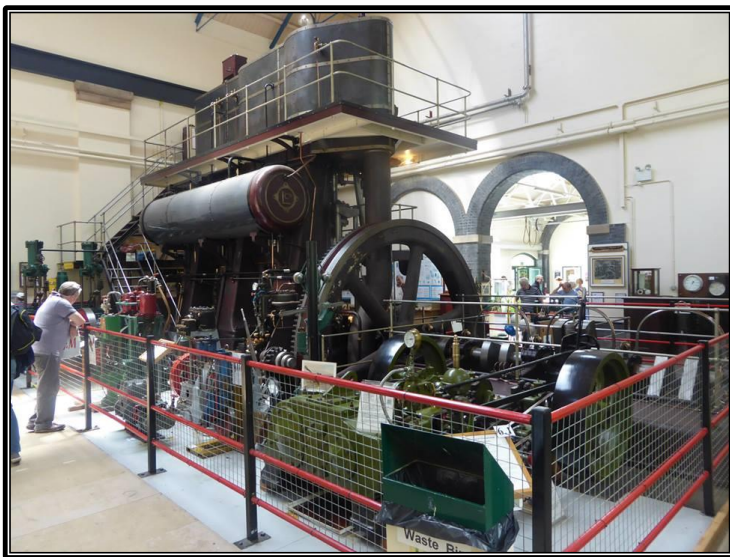




TransportFest

Easter Sunday 12th April 10am-4pm



**Display of all forms of Classic Transport
Brass Band, Entry to Museum included
Largest Engine in Essex on steam & other Historic
Engines working, Miniature Steam Train Rides
Model Village & Steam Pump Tea Room Open**

MUSEUM OF POWER

Hatfield Rd, Langford, Maldon, Essex CM9 6QA

Adults £7.00 Concs. £6.00 Child (5-15) £3.00 & Under 5s Free

Charity No: 1087459



@museumof
power



MofPower

Please view our website to confirm if the miniature railway will be running:

01621 843183 | www.museumofpower.org.uk | enquiries@museumofpower.org.uk