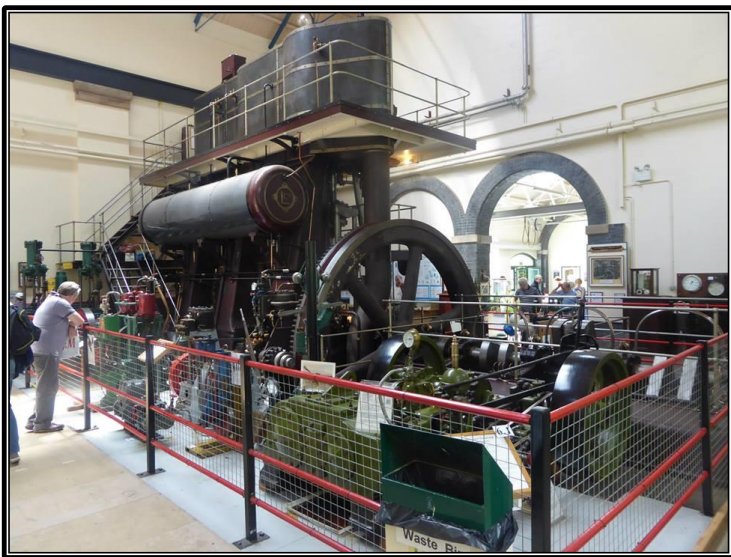




TransportFest

Easter Sunday 21st April 10am-4pm



**Display of all forms of Classic Transport
Brass Band, Entry to Museum included
Largest Steam Engine in Essex & other Historic
Machines on Steam, Miniature Steam Train Rides
Model Village & Steam Pump Tea Room Open**

MUSEUM OF POWER

Hatfield Road, Langford, Maldon CM9 6QA

Adults £7.00 Concs. £6.00 Child (5-15) £3.00 & Under 5s Free

Charity No: 1087459 www.facebook.com/MofPower

01621 843183 | www.museumofpower.org.uk | enquiries@museumofpower.org.uk