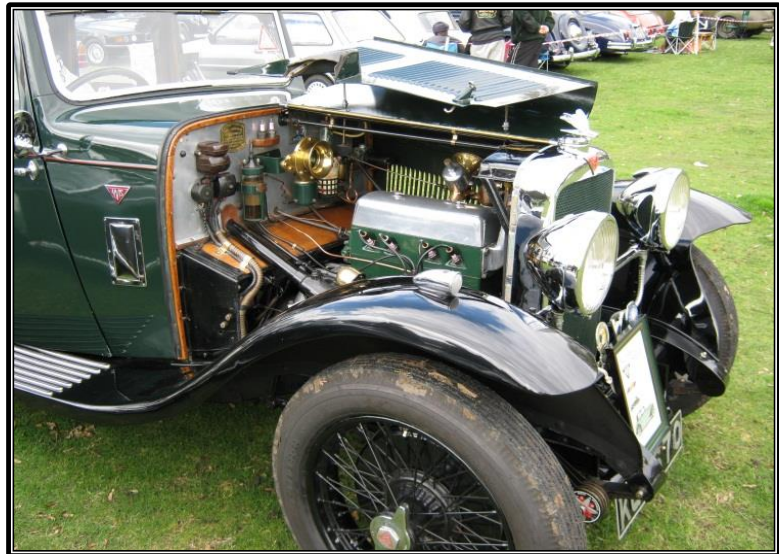
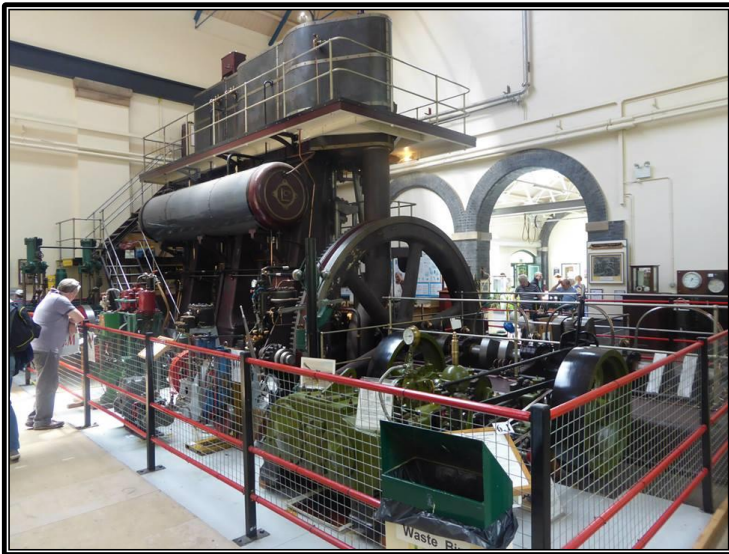




TransportFest

Easter Sunday 1st April 10am-4pm



All forms of pre 1985 transport

Live music, Craft stalls, Entry to museum included

Largest Steam Engine in Essex & other historic machines on steam, Miniature steam train rides

Model Village & Steam Pump Tea Room open

MUSEUM OF POWER

Hatfield Road, Langford, Maldon CM9 6QA

Adults £6.00 Concs. £5.00 Child (5-15) £2.00 & Under 5s Free

www.museumofpower.org.uk Charity No. 1087459